

The Good News

MONTHLY PUBLICATION APRIL 2025 VOLUME 62 NUMBER 4

IN THIS ISSUE

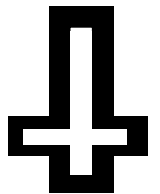


Praise Symphony	Pg. 2
A Note From Pastor Laherty	Pg. 3
Midweek Lenten Worship	Pg. 4
Holy Week Schedule	Pg. 4
Heart And Hands Outreach	Pg. 5
Lily Garden	Pg. 6
Thank you for Serving Emanuel	Pg. 7
St. Jude's Closet	Pg. 8
Book Club	Pg. 9
What's 4 Lunch, Ladies?	Pg. 9
Men Of Emanuel Fellowship Breakfast	Pg. 9
Sunday Bible Readings	Pg. 9
Parish Education	Pg.10
Emanuel Lutheran Egg Hunt	Pg.11
Joy Circle Women's Bible Study	Pg.12
Emanuel Lutheran Preschool is Enrolling	Pg.13
Study Buddies	Pg.13
Pray for One Another	Pg.14
April Calendar	Pg.15
April Birthdays & Anniversaries	Pg.16
Bible Study	Pg.16
Children's Activities	Pg.17

address label here

DATED MATERIAL
Please Deliver by 2nd or
3rd of the month.

SUNDAY WORSHIP SERVICE
10:00 AM
11:00 AM
PASTOR:
Dennis Laherty
Jonline Sodders
PRESCHOOL DIRECTOR:
Spanish Worship is offered at 2:30 pm by House of Faith.
E-mail: churchinfo@elch.org
Website: www.elch.org



RETURN SERVICE REQUESTED
Church: (562)691-0656 Preschool: (562) 694-5316
150 North Palm Street, La Habra, California 90631
Emanuel Evangelical Lutheran Church

Praise Symphony ORCHESTRA IN CONCERT



SUNDAY, APRIL 13
at 5:00 pm
Emanuel Lutheran Church

150 N Palm St.
La Habra, CA 90631

FREE ADMISSION

praisesymphony.org



Pastor April 2025 Newsletter

I have come to realize that in the last three years I have been present with two different long-time friends during their last week of life on earth. One I knew for 50 years and the other for 48 years. Spending the last week with a person before they die produces innumerable feelings. The feelings go from gratitude for the long history together, to an incredible sense of loss when the person dies. What made the deaths so incredibly special were the conversations had with these two believers leading up to their last breath. Although I never want to experience losses like this again, I know that I probably will, and that the importance of the person's belief in Jesus Christ as Savior and Lord makes the separation from them only temporary.

I also realize that it's for this reason that Holy Week is so meaningful for me.

Holy Week, beginning with Jesus' entry into Jerusalem on Palm Sunday, provides a day-by-day opportunity to be with Jesus during his last days before his death. During Holy Week there are an incredible number of emotions that one can experience.

On Maundy Thursday or Holy Thursday, we hear from Scripture how Jesus spent his last evening with the Apostles. What is recorded is what Jesus said to the disciples and what He gave as a memorial for them and for us. I truly believe that Jesus was thinking ahead knowing that believers, generations away, would know about that Thursday evening, and that by repeating His words and actions, would keep Him present in their lives. The evening worship concludes with Jesus going with his Apostles to Gethsemane.

The next worship opportunity is Good Friday. As someone once asked me, why is it called Good Friday if that's the day that Jesus died? It certainly wasn't good for Jesus, but it was good for everybody else because it provided salvation for all who believe in Him. Worship on Good Friday recounts the last day of Jesus' life, the turmoil that led to His death, and the reaction of people who were present.

Given all that Holy Week represents, I encourage you to come to worship especially on Palm Sunday, Maundy Thursday, Good Friday and then the best day of all, Easter Sunday. Participating in worship with these four services can actually be life changing. As you spend time with Jesus during His last week of life, I guarantee, your life will be richer for it.

Pastor Dennis Laherty

Midweek Lenten Worship

Wednesdays at 7:00 p.m. on Zoom

March 12 March 19

March 26 April 2

April 9

Zoom links will be emailed to ALL
Wednesday morning from the church office!



Stories
Bible text
& Music



Wed April 02, 2025 John 9:1-41
Wed April 09, 2025 John 11:1-45

EASTER WORSHIP SCHEDULE

PALM SUNDAY
April 13 10:00 am

**MAUNDY
THURSDAY**
April 17 7 pm

GOOD FRIDAY
April 18 7 pm

**EASTER CELEBRATION
WORSHIP April 20**
10:00 am

Brunch before and
after Worship
Easter Egg hunt
after Worship





HEART AND HANDS OUTREACH SHARING THE GOOD NEWS!

"Feed My Sheep" – John 21

HAHO APRIL UPDATE DISHES FOR PATRIOTS AND PAWS

Through the month of April we will continue collecting usable plates, bowls, cups, silverware and mixing bowls, etc. for veterans moving into their own apartments.

Please open your hearts and hands to buy new or used items, or give away things you will never use again! We love being able to help those who served our country and now struggle to begin life after the service.

We are praying to take a great big load at the end of April and thank you in advance for helping!!!





Lily Garden

Easter Sunday is April 20th and it is again time to order lilies. Please fill out this form if you would like to order a beautiful Easter Lily for our Altar Garden.

PLEASE ORDER _____ LILIES AT \$13.00 EACH.

Please make checks payable to ***Emanuel Lutheran Church***. Please mark your check "lilies." You may also contact the church office directly. The last date to order is April 13

Please fill out the following exactly as you wish it to read in the bulletin:

Given in loving memory of: _____

Given in honor or celebration (circle one) of: _____

Given in thanksgiving to God for: _____

Lilies given by: _____

(List the name(s) of person(s) giving the lily as you want it to appear in the bulletin.)

We hope to distribute the flowers to our shut-ins, area hospitals and convalescent homes after Easter. If you would like to take your lily home with you, please pick it up after the last service on Easter Sunday or the following Monday morning.



Thank you to Jerry Schnakenberg, John Ospital, Jack Ward, and Chip Whitcher who are always willing to help with breakdowns and emergencies at a moment's notice and to provide expert knowledge. These gentlemen are SAINTS!

Thank you to MaryAnn Carlson for her weekly Children's Sermons which are always on target and well-received by everyone in the congregation.

Thank you to all of our members who assist in reading lessons, greeting, serving as ushers, serving communion, and checking in at the table.

Thank you to a faithful group who counts and deposits our offerings every week...led by Carol Crabb, and including Ricki Fehr, Darrell Moyer, Janine Ward, Nancy White, and Steve White.

Thank you to our faithful Office Manager, Lilly Hernandez, who manages to get all requests answered and everything taken care of well, even in the craziest of time restraints and circumstances, and with a beautiful smile and grace.

Thank you to the faithful members who bring food for the Caring Hands Food bank, clothing for the St. Jude Closet, and now we are accumulating a lot of dishes for Patriots and Paws. Such Generosity!

Thank you to everyone who attends worship, prays, and offers time, talent, and treasures for Emanuel's Ministry on behalf of our Lord, and provides love and support to each other.

Thank you to all who have contributed to the Easter Egg hunt. Thank you for the candy, eggs, stickers and all the prep people and volunteers.



St Jude Closet

St Jude Medical Center has a community closet that supplies clothes to patients and homeless in need. Emanuel, through HAHO, has decided to take on the task of helping to keep that closet stocked. Here's where you can help. Check your closets for the following items you aren't using and bring them to church – **gently used**, please. A collection box will be available in the narthex.

This list of requested clothing will also be on the narthex table, so pick one up on your way in or out from church if you need a new one. We do ask that you stay within the list as we've received some items that we weren't able to take such as dresses, women's shorts/skirts, and children's clothes. Any questions about items on the list, please call Sharon Frazier

They are in **HIGH** need of the following:

Men's pants sizes 28-34 and 44-48. Men's shirts sizes M, XXL

Men's jackets sizes L, XL, XXL, XXXL

Women's pants sizes 20+

Women's sneakers sizes 8 and above / Tube socks

Men's sneakers sizes 10 and above / Tube socks

They have an ongoing need for the following:

Men's and Women's casual clothing (gently used, no stains or holes)

Men's & Women's jackets/coats (Men's are in high demand)

Undergarments (new only)

Belts/Scarves/mittens/beanies/backpacks/totes/ponchos (no wallets or purses please)

Shoes (Men's are in high demand)

Also, if you have crutches, walkers, canes, or manual wheel chairs you no longer need, they will be glad to take them. A tax donation letter is available upon request.

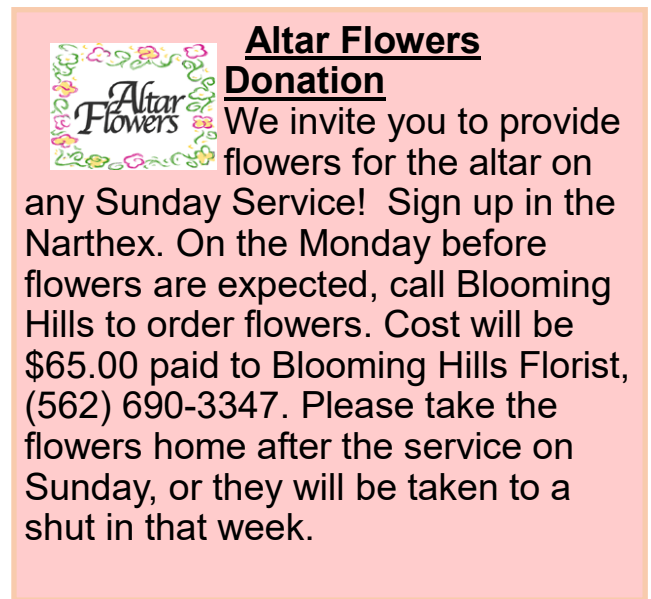
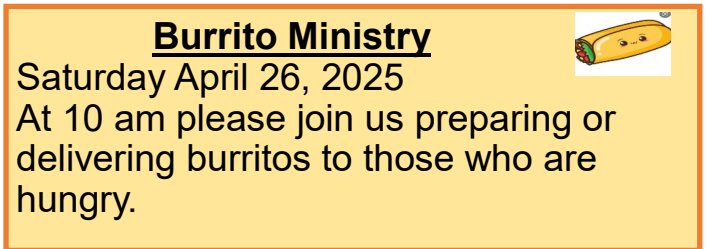
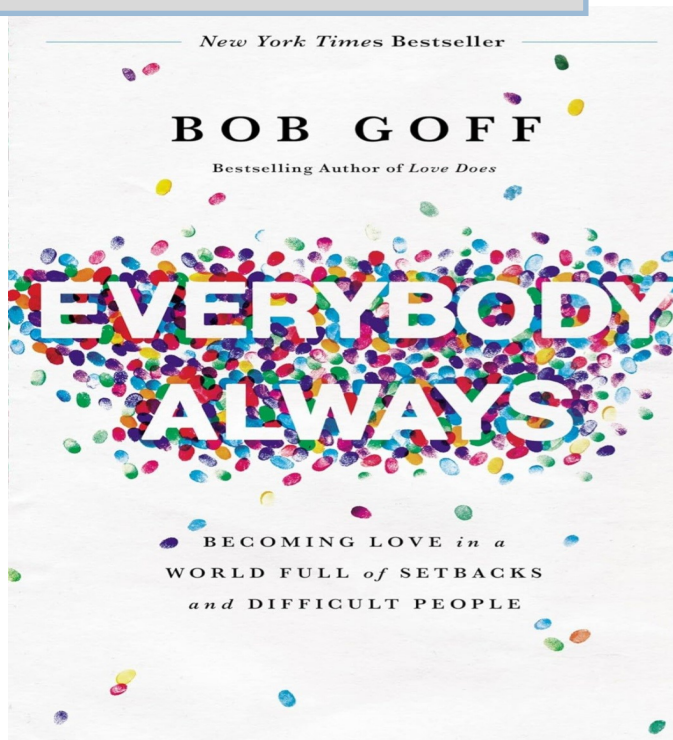
This project is being coordinated through HAHO. If you have questions, please call Sharon or Jeanette.



*Thanks again to the congregation for the clothes for St Jude.
Your generosity is appreciated by those of our community who
are in need.
Sharon*



Going on now every Thursday, at 1pm in the library "Everybody Always".



~ SUNDAY BIBLE READINGS ~

5 Lent

April 6

Isaiah 43:16-21
Psalm 126
Philippians 3:4b-14
John 12:1-8

Palm Sunday

April 13

Isaiah 50:4-9a1-11
Psalm 31:9-16
Philippians 2:5-11
Luke 23:1-49

Easter Sunday

April 20

Acts 10:34-43
Psalm 118:1-2, 14-24
1 Corinthians 15:19-26
John 20:1-18

April 27

Acts 5:27-32
Psalm 150
Revelation 1:4-8
John 20:19-31



April 2025-From the Board of Parish Education

Come join Sunday School in-person each Sunday at 11:00 AM!

Kids three years through eighth grade meets in Moerer Hall at 11:00. Visitors are always welcome!

Sunday School: We learned about Moses receiving the Ten Commandments. These commandments help guide us as we strive to honor each rule. We also discovered that Jesus was tempted by Satan as He was in the wilderness. The good news was that He resisted falling for Satan tricks. Jesus is there for us when we are tempted to make a wrong choice. He knows how we feel when we are tempted.

Offerings: Students are contributing to help the people affected by the recent L.A. fires. Our donations will be sent to Lutheran Disaster Relief where they will be forwarded to the area of most need.

Study Buddies: Study Buddies did not meet during La Habra's Spring Break March 17-21 and will not meet during Holy Week (April 14-18). The program is open to all children in our surrounding neighborhood as well as our Emanuel Lutheran families on Tuesdays and Thursdays from 3:00-4:30 PM.

Community Egg Hunt and Craft Event: Saturday, April 5, 2025, from 11:00AM to 1:30PM. Animals from Luther Glen Farm will be coming so kids can see and pet them. This is a highlight for all who attend. Many fun, creative crafts will be available for parents and kids to have the opportunity to make. A free lunch will be served, and the Easter story will be read to the children and guests before they take off on an Easter Egg Hunt.

We need many wonderful volunteers and donations of candy and stickers to fill our many plastic eggs. Look for the Sign-up sheet at the Welcome Table on Sunday. Our Prep Day is Saturday March 29 at 10:00AM. Families learn a lot about Emanuel through this Community outreach event.

Come join the fun!

Please continue to pray for the spiritual growth of our youth and adults.
Parish Education Team



EMANUEL'S ANNUAL COMMUNITY EGG HUNT

APRIL 5

CAN YOU HELP?

Here's what we need

1. candy or stickers for plastic eggs
(We have all the plastic eggs we need thanks to you!)
2. paper egg cartons
3. capri sun drinks
4. Volunteers for prep Day on March 29 at 10 am
5. Volunteers for Sat. April 5th - event day





JOY CIRCLE Monday, April 21, 2025 9:30AM - 11:30AM

This month we will conclude the four part Bible study series on faithfulness. This month we will conclude with a study entitled "Faith Risks: Jairus and the Faithful Woman." These have been great studies that have challenged us to think how the word of God impacts our lives. Each study stands alone, so you are never behind.

Faithful attendees, please invite a friend! That is how most of us came to join this lovely group. May you each experience the joy of Easter more fully by attending the meaningful Holy Week services.



EASY WAYS TO SUPPORT EMANUEL FINANCIALLY

Thank you for your financial gifts to God through Emanuel Lutheran Church!!!

Below are 4 ways to give:

- Entryway offering plate
- Mail to the Church Office
- "Giving" link online at www.elclh.org
- Text dollar amount to 562-210-0007

Our bank has recently notified us how checks must be written in order to be accepted. We are asking for your assistance to avoid future checks being refused.

- Checks must be made payable to **EMANUEL LUTHERAN CHURCH** (full name written out)
- Checks are to be written using **blue or black ink only** (other colors not acceptable)
- Make sure the **number in the amount is the same as the amount written in words**

You Tube



TO WORSHIP WITH US ONLINE AND VIA LIVE STREAM, GO TO

- Emanuel's website: <http://elclh.org>
- YouTube: Emanuel Lutheran Church La Habra
<https://www.youtube.com/channel/UC4Fu6qvPdYF2MM92JzoU9uA>
- Facebook: Emanuel Evangelical Lutheran Church
<https://www.facebook.com/emanuel.lutheran.1>

**Closed captioning is available on both YouTube and Facebook.
Visit Emanuel's website or find us on Instagram**

Emanuel Lutheran Preschool Now Enrolling



Emanuel Lutheran Preschool is now Enrolling students!

- Our preschool is open all year-round.
- We are state licensed, non-profit organization dedicated to providing an atmosphere of love and acceptance in which all children are encouraged to develop to their fullest potential.
- Our teachers are dedicated to support and inspire your child's progress.
- Daily activities include motor development, social skills, and language skills to benefit your child at their appropriate level.

If you or someone you know is looking for child care reach out to preschool director Jonine Soddors (562)694-5316 or email EmanuelPreschoolLaHabra@hotmail.com



TO WORSHIP WITH US ONLINE AND VIA LIVE STREAM, GO TO

- Emanuel's website: <http://elclh.org>
- YouTube: Emanuel Lutheran Church La Habra
<https://www.youtube.com/channel/UC4Fu6qvPdYF2MM92JzoU9uA>
- Facebook: Emanuel Evangelical Lutheran Church
<https://www.facebook.com/emanuel.lutheran.1>



Closed captioning is available on both YouTube and Facebook.
Visit Emanuel's website or find us on Instagram (emanuellahabra) for upcoming events

FREE STUDY BUDDIES TUTORING TUESDAY & THURSDAY, 3-4:30 PM

Study Buddies, our FREE tutoring program for grades 1-6, meets at Emanuel on Tuesdays and Thursdays from 3-4:30 PM in the Hope Center Library.

If you'd like to contribute to the fun, they are always in need of snacks for the kids. Lunch box size bags of chips and small water bottles are supplied to our students while they study.

Invite a friend or neighbor! Flyers are available at Sunday's Welcome Table.



~ PRAYER ~

**GOD'S WORD TELLS US IT IS THE
MOST POWERFUL FORCE GOD
HAS ENTRUSTED TO US!**

*Have a prayer request for
yourself or others?*

Call or email the church office and we will share it with the Prayer Team.

*Want to make time to pray
with others?*

Consider joining the Prayer Group in person in the Youth Room or via Zoom 8:30-9:30 AM Saturday mornings.

*Want to be part of the Prayer
Team?*

Contact the church office.
**Celebrating 12 years of meeting
and praying together**



PRAY FOR ONE ANOTHER APRIL 2025

*** Save this for reference throughout the month. ***

"Be joyful in hope, patient in affliction, and faithful in prayer." Romans 12:12

Special Prayer Focus for This Month

- ~ For April, consider focusing your prayers on seeking divine guidance, wisdom, and strength as you navigate new opportunities and challenges, while also remembering to give thanks and praise for God's blessings.
- ~ For all people dealing with natural disasters around the world. Those who have lost loved ones, homes, pets and everything they own.

Continuing Prayers

- ~ Dan Toussaint
- ~ Celeste Templeton
- ~ Justin Hambly and family, Maiju Hessel's grandson in law
- ~ Evelyn Snyder, friend of Jill Drummond

If you have Prayer requests for the next 8 weeks, please contact the Church office to add names.

Assisted Living Centers/Homebound

- | | |
|-------------------------------|-------------------------------|
| ~ Shirley Jordan – Park Vista | ~ Jean Arata |
| ~ Margaret Roberts | ~ Lee Reitzel – Emerald Court |

Friends and Family to Remember

- ~ Lin Baesler, wife of Pastor Ron Baesler


Prayers of Thanksgiving

- ~ For all God's blessings, those we see and so many big and small ways God provides for our needs, often before we even know our need.
- ~ Thank You, God, for those who are here to share these blessings this month, for the generosity of our hosts that make this possible. Bless those who are here and those who are in our hearts, and all those who are not as fortunate.

If you have prayer concerns to add to Emanuel's list, please contact the church office at (562) 691-0656.

Once a month, names will be removed from the list that have been in print at least eight consecutive weeks (except those who request extended prayer). You are welcome to re-submit any names removed from the list, or you may remove a name at any time by contacting the church office. Thank you.

APRIL 2025

SUNDAY	MONDAY	TUESDAY	WEDNESDAY	THURSDAY	FRIDAY	SATURDAY
March 2025 S M T W T F S 1 2 3 4 5 6 7 8 9 10 11 12 13 14 15 16 17 18 19 20 21 22 23 24 25 26 27 28 29 30 31		1 3-4:30p Study Buddies (L) 6p BSF (ALL)	2 9a Bible Study (L/Z) 10a Bridge Club (H) 7:30p Al-Anon © 7pm Midweek Lenten (z)	3 1p Book Club (L) 3-4:30p Study Buddies (L) 6p District 18 (H) 6:30p Bells and Choir (S) 7-9p HOF (4)	4 6-10:30p HOF (S) 7:30-8:30p HOF (CR 2,4,Y) 8p AA (H)	5 7-9a BSF Leaders (H/F) 8a Men's Breakfast 8:30a Prayer Group (Y,Z) 9:30-2p Egg Hunt 9:30-11a HoF (4) 4:30-7p Narc-Anon (C)
6 9:30a-12:30p HOF (YR) 10a Worship Service (S) 11a Sunday School (H) 12:30-7p HOF(ALL)	7 10a Stephen Ministry 7-9p HOF (S) 7:30p AA (H)	8 3-4:30p Study Buddies (L) 6p BSF (All)	9 9a Bible Study (L/Z) 10a Bridge Club (H) 10:15a Preschool Brd mtg 7 pm Midweek Lenten (z) 7:30p Al-anon (C)	10 1p Book Club (L) 3-4:30p Study Buddies (L) 6:30p Bells and Choir (s) 7-9p HOF (4)	11 6-10:30p HOF (S) 7:30-8:30p HOF(CR 2,4,Y) 8p AA (H)	12 7-9a BSF Leaders 8:30a Prayer Group (Y,Z) 11-5p AA Women's 4:30-7p Narc-Anon (C) 6p-12a HoF (4)
13 Palm Sunday 9:30a-12:30p HOF (YR) 10a Worship Service (S) 11a Sunday School (H) 12:30-7p HOF(ALL)	14 7-9p HOF (S) 7:30p AA (H)	15 Good News Deadline 6p BSF (ALL)	16 9a Bible Study (L/Z) 10a Bridge Club (H) 7:30p Al-Anon (C)	17 Maundy Thursday 6:30p Bells and Choir (S) 7-9p HOF(4) 7p Maundy Thursday Worship	18 Good Friday 6-10:30p HOF (S) 7:30-8:30p HOF (CR 2,4,Y) 8p AA (H) 7p Good Friday Worship	19 7-9:30a BSF Leaders 8:30a Prayer Group (Y,Z) 9:30-11a HOF (4) 4:30-7p Narc-Anon (C)
20 Easter Sunday 9a Easter Brunch 9:30a-12:30p HOF (YR) 10a Worship Service (S) 11a Sunday School (H) 12:30-7p HOF(ALL)	21 9:30a Joy Circle (H) 7-9p HOF (S) 7:30p AA (H)	22 3-4:30p Study Buddies (L) 5:30p Church Council (L,Z) 6p BSF (ALL)	23 9a Bible Study (L/Z) 10a Bridge Club (H) 7:30p Al-Anon (C)	24 1p Book Club (L) 3-4:30p Study Buddies (L) 6:30p Bells and Choir (S) 7-9p HOF (4)	25 11:30a What's 4Lunch Ladies 6-10:30p HOF (S) 7:30-8:30p HOF (CR 2,4,Y) 8p AA (H)	26 7-9:30a BSF Leaders 8:30a Prayer Group (Y,Z) 10a Burrito Ministry 4:30-7p Narc-Anon (C) 6p-12a HOF (4)
27 9:30a-12:30p HOF (YR) 10a Worship Service (S) 11a Sunday School (H) 12:30-7p HOF(ALL)	28 7-9p HOF (S) 7:30p AA (H)	29 3-4:30p Study Buddies (L) 6p BSF (ALL)	30 9a Bible Study (L/Z) 10a Bridge Club (H) 7:30p Al-Anon (C)		May 2025 S M T W T F S 1 2 3 4 5 6 7 8 9 10 11 12 13 14 15 16 17 18 19 20 21 22 23 24 25 26 27 28 29 30 31	

Emanuel Lutheran Church: 150 N. Palm Street, La Habra, CA 90631 • Phone 562-691-0656,
www.elclh.org • Preschool: 562-694-5316
 Alanon meets in Hope Center, Wednesday @ 7:30 pm; AA (Alcoholics Anonymous) meets in Moerer Hall Monday @ 7:30 pm & Friday @ 8pm
 Legend: C: Hope Center Classroom; CH: Chapel; F: Fireside Room; H: Moerer Hall; L: Hope Center Library; S: Sanctuary; Y: Youth Room; Z: Zoom



BOOK OF LUKE
WED 9-10 AM IN THE LIBRARY
****NO EXPERIENCE NEEDED!****



We are reading the book of Luke. Come join us in the Emanuel library 9 a.m. Wednesday. Call or email the church office at churchinfo@elclh.org to receive the Zoom link if you can not make it in person. All you need is a computer, tablet or smartphone.

CHRIST IN OUR HOME
APR/MAY/JUNE
NOW AVAILABLE

This quarterly devotional resource encourages us to live out our faith daily. Each reflective reading is accompanied by a daily scripture reference and prayer for the day that follows the Revised Common Lectionary. Booklets are available in the church entryway or office. Email churchinfo@elclh.org if you would like a copy mailed to you.



Bible Quiz

Who said to the prophet Nathan,
 "I have sinned against the LORD?"

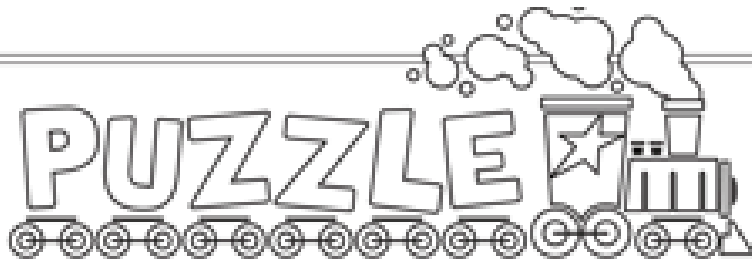
- A. Reuben, for selling Joseph into slavery
- B. Jacob, for deceiving Isaac and stealing his brother's birthright
- C. Rahab, a prostitute
- D. David, considered Israel's greatest king



Answer: D (See 2 Samuel 12:13)

Kid's Korner

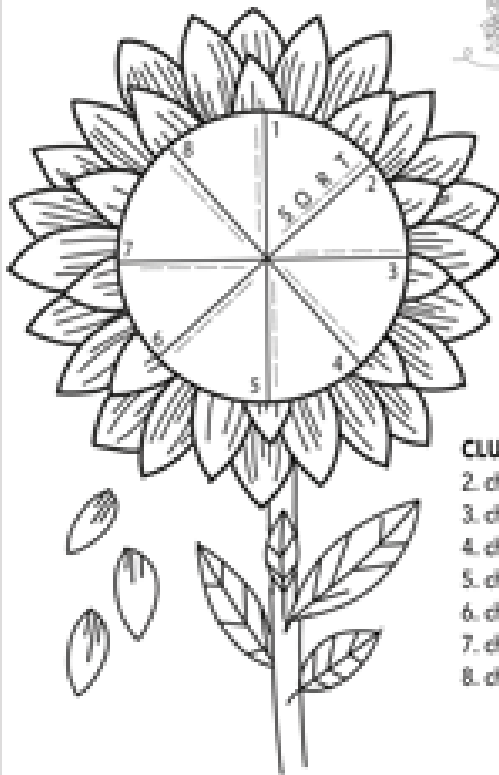
PUZZLE



THE LOVE CYCLE

In 1 John 4, God instructs us to love other people. Where does our love come from?

Directions: Starting at #1 and going clockwise, solve each clue to create a new four-letter word. Then write the eighth word in both blanks below to complete 1 John 4:19, NIV.



We _____
because [God] first
_____d us.

1 John 4:19, NIV

CLUES

2. change 1 letter: a tent to play in
3. change 2 letters: a crease in paper
4. change 1 letter: a precious metal
5. change 2 letters: a beautiful dress
6. change 1 letter: opposite of up
7. change 2 letters: a type of bird
8. change 1 letter: God is this
(see 1 John 4:16).



Springing to LIFE



New life defines the season of spring. Make this Easter craft that symbolizes rebirth.

What you need:

- Brown paper lunch bag
- Scissors
- Pencil
- Glue stick
- Jellybeans



What you do:

1. From the bag's bottom, cut two 2-inch circles. Set aside.
2. From the sides, cut two 10-inch circles.
3. Draw a thin spiral on each large circle and cut along the lines. Crinkle spirals gently.
4. Starting at the center, wrap one spiral into a nest. Glue every few inches to hold it.
5. Glue one small circle to the bottom of the nest.
6. Repeat with the other spiral. Fill nests with jellybeans and give to a friend!



Answers: 1. tent, 2. heart, 3. crease, 4. metal, 5. dress, 6. down, 7. dove, 8. love. We love because [God] first loved us. 1 John 4:19, NIV